



**IT'S PRETTY AMAZING THAT
OUR SOCIETY HAS REACHED A POINT
WHERE THE EFFORT NECESSARY TO
EXTRACT OIL FROM THE GROUND,
SHIP IT TO A REFINERY,
TURN IT INTO PLASTIC,
SHAPE IT APPROPRIATELY,
TRUCK IT TO A STORE,
BUY IT, AND BRING IT HOME**

**IS CONSIDERED TO BE LESS EFFORT THAN WHAT IT TAKES
TO JUST WASH THE SPOON WHEN YOU'RE DONE WITH IT.**





$$1+1+1+1+1+1=0$$

The Babel tower and the Holistic approach



ELEVATION OF THE TOWER OF BABEL

IUCN

Close the Plastic Tap
Programme



YEARLY PLASTIC PRODUCTION

415 MT/y

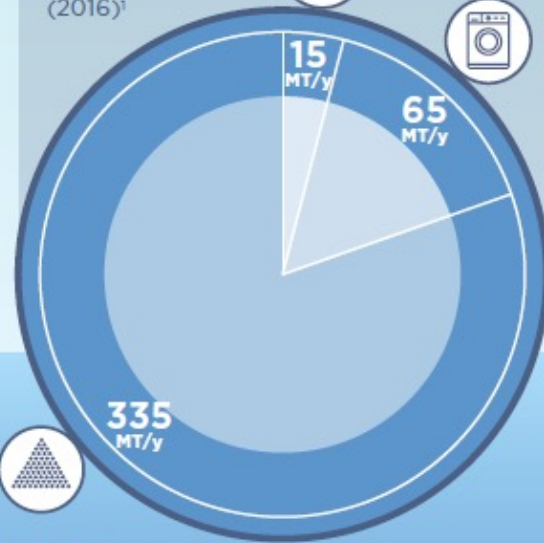
SYNTHETIC RUBBER FOR TYRES
(2016)¹



TEXTILE SYNTHETIC FIBERS
(2016)²



PLASTIC PELLETS
(2016)³



3%
LEAKAGE

YEARLY PLASTIC LEAKAGE

12 MT/y

FROM PRIMARY MICROPLASTICS



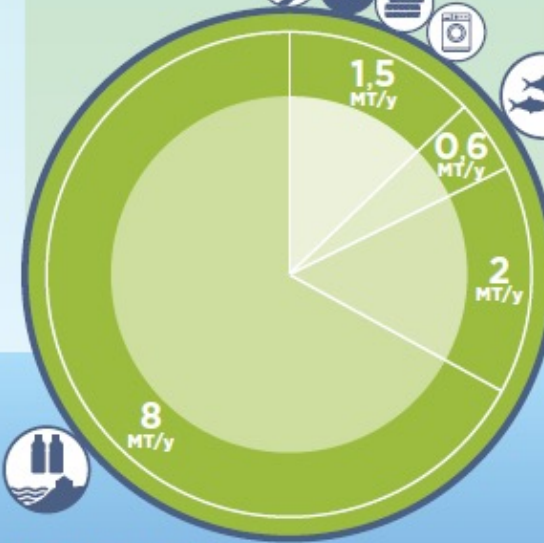
FROM LOST FISHING NETS



FROM INLAND MISMANAGED WASTE



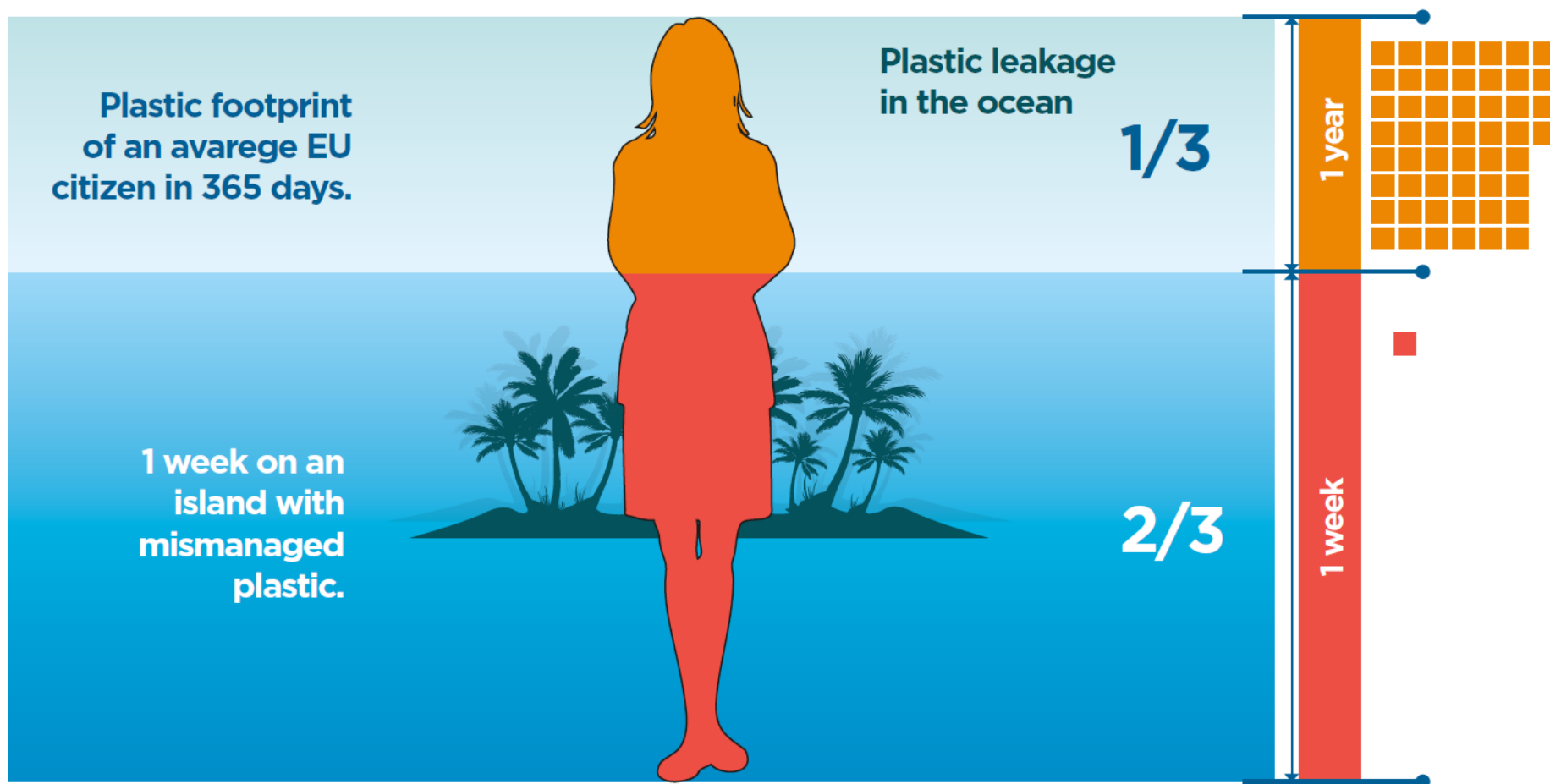
FROM COASTAL MISMANAGED WASTE



A growing global portfolio



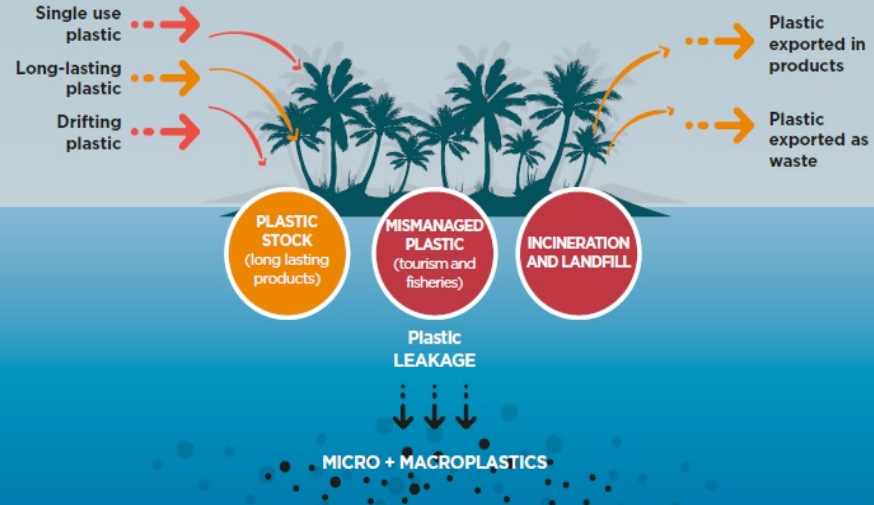
The tourist plastic trap



BEFORE

INPUT

OUTPUT



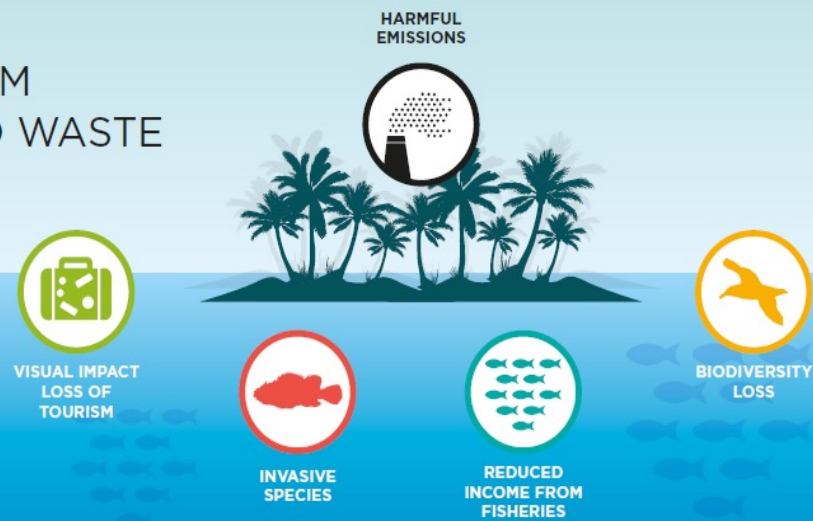
AFTER

INPUT

OUTPUT

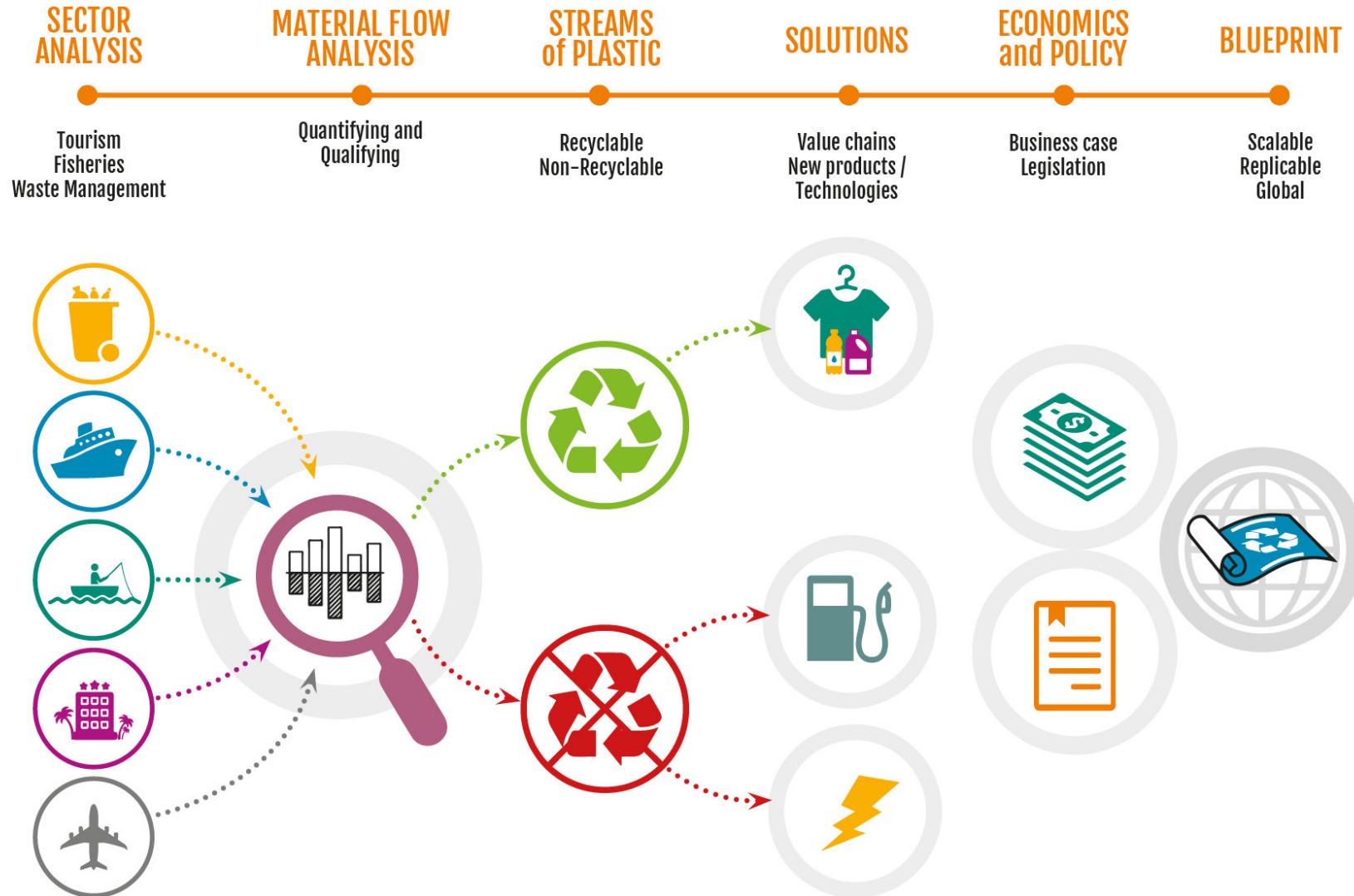


IMPACTS FROM MISMANAGED WASTE



PLASTIC WASTE FREE ISLAND

Project • Caribbean and Pacific

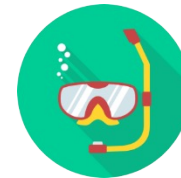




Plastic Waste Free Islands

Outcomes

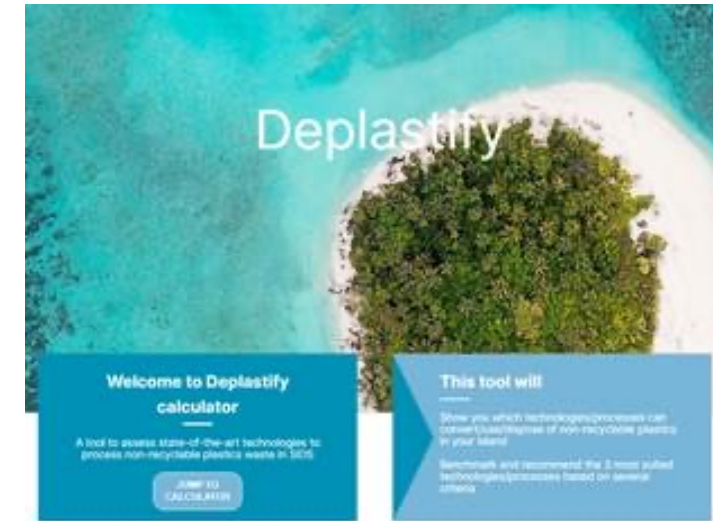
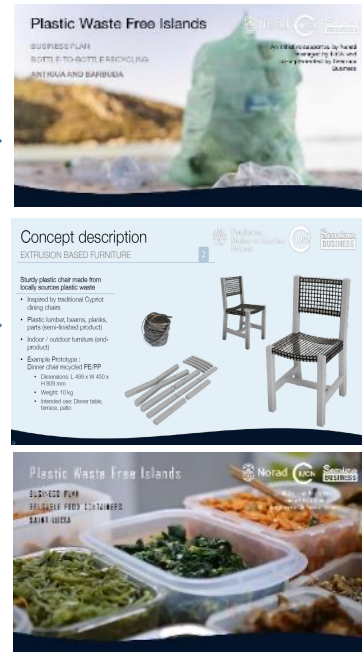
- **Generate knowledge**
- **Support Government and Private sector**
- **Enabling the creation of new value chains and jobs**
- **Support and facilitate investment in waste management**
- **Develop a blueprint for islands to prevent plastic waste leakage.**



Country Specific Tailored Solutions: Recycle and Conversion

Solutions	
	Bottle-to-bottle recycling
	Reusable water bottles at hotels and cruise lines
	Non-food dispensing system for hotels
	Waste to product
	Reusable PET water bottles from bottling company 25x reuses
	Reusable food containers
	Circular B2B logistics
	Net-to-net recycling
	Reusable fish packaging

6 Products



How to use Deplastify

A tool to identify technologies and processes that can convert/use/dispose of economically non-recyclable plastics for Small Island States, and recommend the best options to consider based on the local conditions



Thank you

joao.sousa@IUCN.org

[www.iucn.org/theme/
marine-and-polar/our-
work/close-plastic-tap-
programme](http://www.iucn.org/theme/marine-and-polar/our-work/close-plastic-tap-programme)